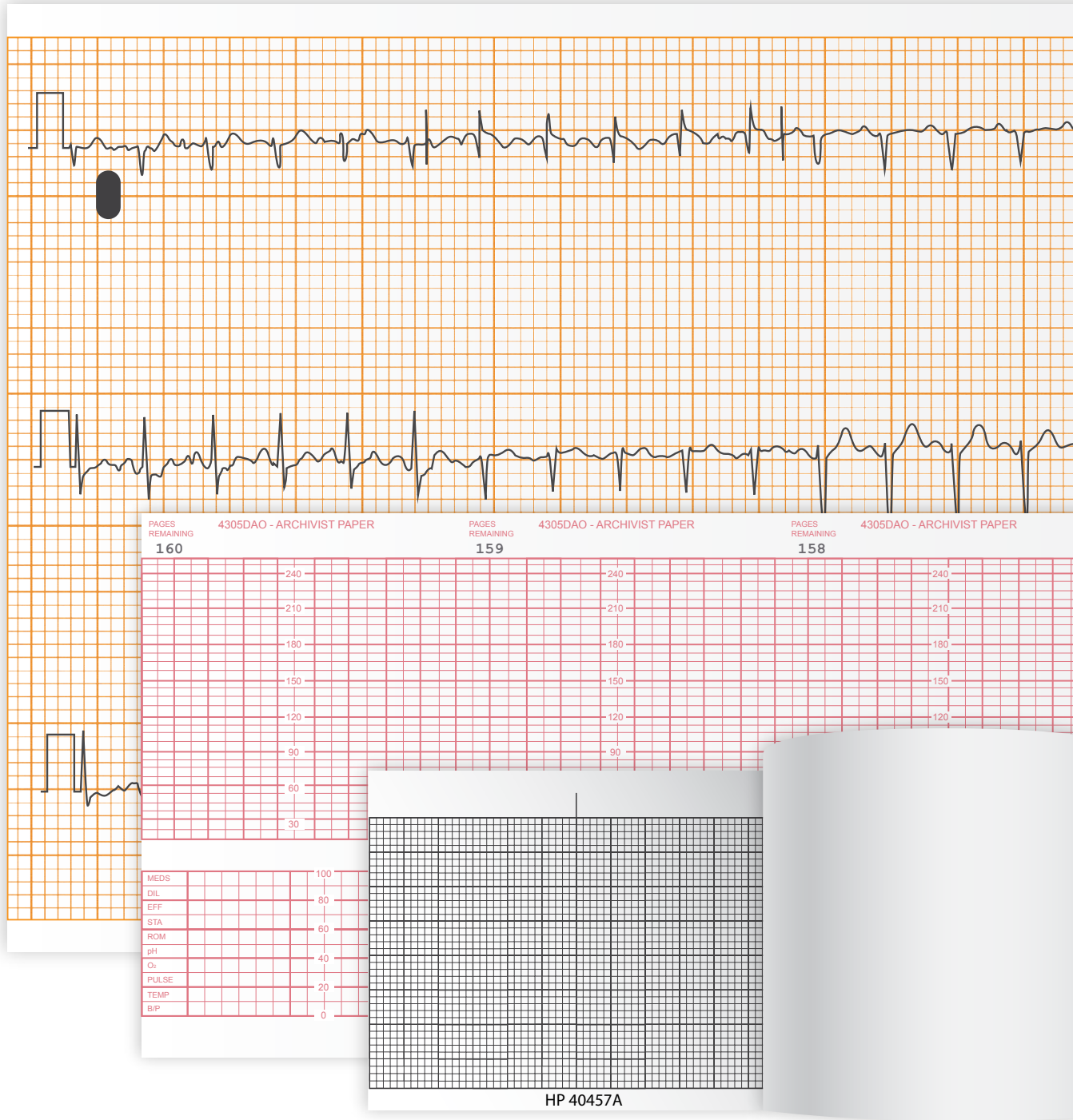


PATIENT MONITORING



CHARTS AND ACCESSORIES

nissHa
MEDICAL TECHNOLOGIES

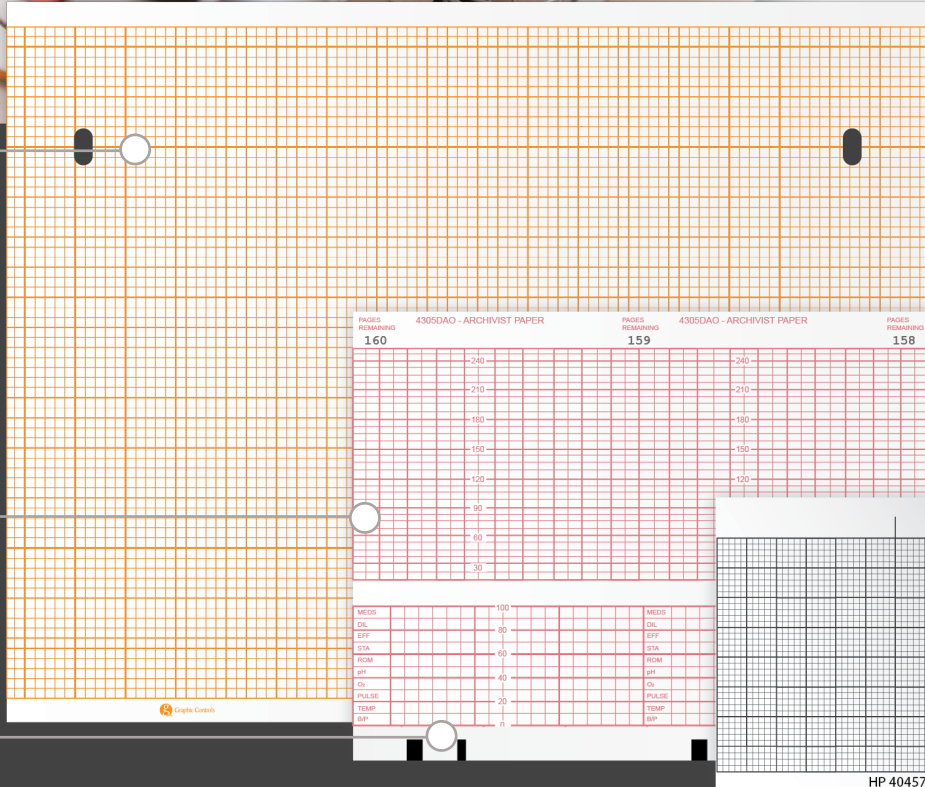
HEALTHCARE
SOLUTIONS



EXACTING PRINT QUALITY
 The tightest tolerance and optimal print density ensures your charts are precise and easy to read.

ARCHIVAL MEDICAL GRADE
 Providing long-lasting trace readability under the proper storage conditions for up to 25 years.

PRECISION SENSE MARKS
 Our adherence to optimal density of the OEM specifications guarantees accurate measurements.



Medical Chart Paper

Standardization Made Simple™

Nissha Medical Technologies (formerly Graphic Controls) is the ORIGINAL Chart Paper manufacturer, offering the widest assortment of chart papers for all departments in the hospital. We manufacture in the UK and USA to strict OEM specifications. We offer the exact same grade of paper, dimensions and archival qualities as the Original Equipment Manufacturers giving you the best VALUE product on the market - OEM quality at a significant savings.

FEATURED CHART PAPERS

Product #	OEM	Cross Ref.	Description	Channels	UOM	Per Case
30597226	Corometrics	CMS 4305	152mm x 47' with Labels	Fetal	Pad	40 Pads
30767589	Corometrics	CMS 4305 BAO	152mm x 47' 160pg	Fetal	Pad	40 Pads
2003454C	Corometrics	CMS 4483	140mm x 130'	Fetal	Pad	12 Pads
4001556C	Corometrics	CMS 4305DAO 25 yr	152mm x 47'	Fetal	Pad	40 Pads
4009465C	Corpuls	COP 04121 / CORPULS 3 / D371		Single Channel	Roll	10 Rolls
2022033C	Hellige	HEB 22616605	210mm x 45m 150sh/pd	Multi Channel	Pad	10 Pads
4000468C	Hellige	HEB 22616611 25 yr	210mm x 45m 25yr	Multi Channel	Pad	1 Pad
10632900	Hewlett Packard	HP 40457A (can order 10)	50mm x 100'	Single Channel	Roll	50 Rolls
2000036C	Hewlett Packard	HP 40477A	50mm x 89' No Print	Single Channel	Roll	10 Rolls
4006120C	Hewlett Packard	HP M1709A	209.5mm x 197'	Multi Channel	Pad	8 Pads
32016831	Hewlett Packard	HP M1911A	150mm x 49'	Fetal	Pad	40 Pads
32021183	Hewlett Packard	HP M1911A 25yr	150mm x 49' 25yr	Fetal	Pad	40 Pads
4000700C	Hewlett Packard	HP 3708A	210mm x 30m 100sh/pd	Multi Channel	Pad	1 Pad
2010895C	Humphrey	HUM 0414-587		n/a	Roll	10 Rolls
2010895C	Humphrey	HUM 24433	216mm x 30m	n/a	Roll	1 Roll
2000060C	Marquette / GE	MQE 9402-020	8.441" x 275' 300sh/pd	Multi Channel	Pad	1 Pad
2000151C	Marquette / GE	MQE 9402-021	8.234" x 275' 300sh/pd	Multi Channel	Pad	1 Pad
0103931C	Micro Medical	MI PSA1600	112mm x 8m	n/a	Roll	5 Rolls
0104415C	Mortara	MRN 9100-026-51	8.250" x 75m 250sh/pd	Multi Channel	Pad	5 Pads
32018225	Philips	PHM 989803137011	8.464" x 11" 250sh/pd	Multi Channel	Pad	12 Pads
4000650C	Philips	PHM 989803138171	75mm x 25m	Single Channel	Roll	5 Rolls
4000651C	Philips	PHM 989803102321	215mm x 84m 300sh/pd	Multi Channel	Pad	5 Pads
4004747C	Philips	PHM 989803131817 - Archival	75mm x 25m	Single Channel	Roll	5 Rolls
2023274C	Physio Controls	PHY 805319-03	106.5mm x 75'	Single Channel	Roll	2 Rolls
30718970	Physio Controls	PHY 804700 (can order 5)	50mm x 100'	Single Channel	Roll	50 Rolls
4004362C	Physio Controls	THMAMB5		Single Channel	Roll	50 Rolls
2010677C	PrinterRol	TP20225 0800/042/5		n/a	Roll	5 Rolls
4009491C	Siemens	SIS 5773		n/a	Roll	20 Rolls
2000089C	Sonicaid	SON 8400-8003	142.5mm x 45m	Fetal	Pad	1 Pad
4000505C	Welch Allyn	WA 94018-0000	8.243" x 56m 200sh/pd	Single Channel	Pad	1 Pads
2026560C	Zoll	ZL 8000-0300	90mm x 18m 200sh/pd	Single Channel	Pad	1 Pad
4009107C	Zoll	ZL 8000-000901 (X-Series)	79mm x 27.5m	Multi Channel	Roll	20 Rolls
4009368C	Zoll	ZL 8000-00910-01				

For a complete listing of chart papers available, please visit HS.NisshaMedical.com/uk/ or contact your local Sales Representative.



Nissha Medical Technologies LTD

Torbay Business Park
Woodview Road
Paignton, Devon, UK
TQ4 7HP
[HS.NisshaMedical.com/uk/](https://www.HS.NisshaMedical.com/uk/)
+44 1803 860100

NMT004CHR-UK DoP: Oct 2020